

Birthplace Bound

2025 Troop Travel Planner



Juliette Gordon Low
Birthplace Museum

Savannah/Hilton Head International (SAV): A Proud Supporter of the Girl Scouts

11 AIRLINES • 32 NONSTOP DESTINATIONS



SAVANNAH HILTON HEAD
INTERNATIONAL

flySAV.com



allegiant

American Airlines

avelo
AIRLINES

Breeze

DELTA

FRONTIER
AIRLINES

jetBlue

Silver
AIRWAYS

Southwest

sun country airlines

UNITED

Contents

All About the Birthplace

- 4 Letter from the Director
- 8 Birthplace History
- 10 Operating Hours
- 10 Accessibility
- 12 Guided Tours
- 14 Girl Scout Troop Experiences
- 22 Reservation Process
- 24 Museum Store
- 26 Frequently Asked Questions
- 27 Girl Scout's Own & Pinning
- 28 Circle of Friends

All About Savannah

- 32 City History
- 34 Traveling to Savannah
- 35 Where to Stay
- 37 Getting Around
- 39 Must-See Girl Scout Spots
- 40 Downtown Savannah
- 42 Midtown Savannah
- 45 Tybee Island
- 46 Advertisers Map
- 48 Advertisers Index

Disclaimer: The advertisements in Birthplace Bound help support the Juliette Gordon Low Birthplace. **The hotels, restaurants, tour companies, and attractions with a Circle of Friends logo have made an extra donation to support our site.** The Birthplace does not endorse any advertiser. We thank our advertisers for their interest and support.



Hello Girl Scouts!

Thank you for choosing to visit the Juliette Gordon Low Birthplace Museum. I'm honored that your troop has picked Savannah as your destination, and I look forward to welcoming you to the place where Juliette's inspiring vision began.

As you explore our historic city, you will walk the same streets as our remarkable founder. Her energy and imagination shaped the Girl Scout Movement and continue to guide generations of young women toward leadership, curiosity, and service.

Every step you take—whether touring the Birthplace, learning about Juliette's life, or discovering the landmarks of her hometown—carries her legacy forward. Your presence keeps her spirit alive, ensuring that her commitment to helping girls grow into confident, capable adults remains a living tradition.

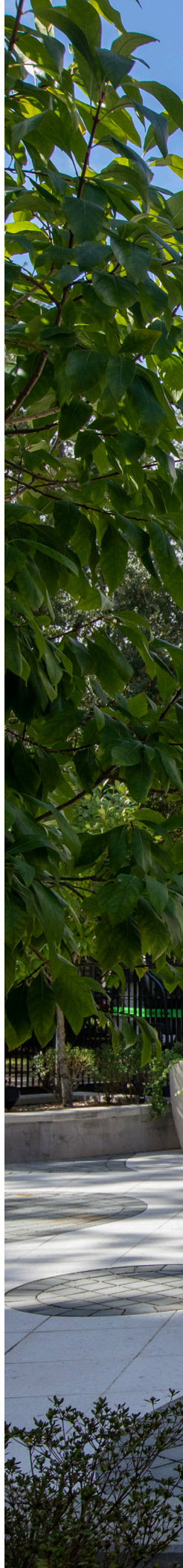
I'm grateful for the opportunity to share this story with you and can't wait to see you here in Savannah. Safe travels, and until then, thank you for being part of Juliette's story.



Sincerely,

A handwritten signature in cursive script that reads "Shannon Browning-Mullis".

Shannon Browning-Mullis
Executive Director
Juliette Gordon Low Birthplace





Old Town Trolley Tours® of Savannah



Offering a private non-stop tour!
• 75-minute tour • Groups of 30 or more
Discounted rates for groups 10 or more!

All aboard Savannah's Best Sightseeing Tour! Sit back and relax as our professional and talented conductors share the history, sights, and charming city squares on our private comprehensive, 90-minute tour of Georgia's First City. Old Town Trolley Tours® of Savannah offers visitors a first glance at life in an enchanting and alluring Southern town.

Enjoy the opportunities to get off the trolley at any of our 15 stops for optional activities, shopping, dining.

912•233•0083 (OPTION 4)



learn how to become

a bee champion

(and earn your Bee Garden Tour badge)

Bee Garden Tours | Honey Tastings

Gifts | Personal Care + Wellness

Broughton Street • River Street • Johnny Mercer Blvd.

savannahbee.com

All About the Birthplace

HISTORY

Welcome to where it all began—the Juliette Gordon Low Birthplace. As a troop leader, knowing the history of our site makes for an enriching visit, not just for you but for your troop as well.

The Birthplace of Juliette Gordon Low is Savannah's first National Historic Landmark and one of the city's most popular historic house museums. Elizabeth and James Moore Wayne commissioned the home in 1821 at the corner of Bull St and South Broad St, now Oglethorpe Avenue today. James, Juliette's great-great uncle, later served as a United States Supreme Court Justice. In 1831, Juliette's grandparents purchased the home. Her grandfather, William, died young, but Sarah resided here until she passed in 1882. On October 31, 1860, Juliette, affectionately

known as Daisy, was born in the house and stayed there with her family during the Civil War.

Its role as the family seat continued when Daisy's father bought the house after his mother's death. Daisy's family had deep connections to the house, even when they were living close by. As children, she and her cousins played there together regularly, and the newly renovated house was the center of Daisy's wedding. In March 1912, Daisy made the famous phone call to her cousin Nina Pape, announcing the founding of the Girl Guides of America (changed to Girl Scouts in 1913).

Girl Scouts of the USA saved the house by purchasing it in 1953 to be a Girl Scout program center and historic house museum. Advancing \$65,000 from its capital fund to buy the house, they soon discovered it would



take nearly three times the purchase price to restore the property. A fundraising campaign, announced in the April 1954 edition of *The Girl Scout Leader* magazine, encouraged girls and councils to help fund the restoration. A national goal of \$500,000 was set to pay for the



purchase, restoration, upkeep, and running of the Birthplace.

For over 63 years, Girl Scouts has stewarded the Juliette Gordon Low Birthplace, striving to find the balance between preservation and accessibility for the thousands who visit each

year. In 1965, the National Park Service emphasized the site's significance by placing it the National Register of Historic Places. In 2007, the Juliette Gordon Low Birthplace, the Andrew Low House, and the Girl Scout First Headquarters were made a National Historic Landmark

District, the highest category of historic resources recognized by the Department of the Interior. Other accolades have followed, including preservation awards from the Historic Savannah Foundation and the American Institute of Architects in Savannah.

Operating Schedule

Plan your visit efficiently by knowing our operating schedule. Special events and inclement weather may change our site's hours. Check the Birthplace website for up to date information.

Regular Schedule

Open 7 days a week,
10:00 a.m.–4:00 p.m.;
last tour begins at 3:50
p.m.

Limited hours on
Wednesdays.
Museum store open
until 5:00 p.m.

June Schedule

Open 7 days a week,
10:00 a.m.–4:00 p.m.;
last tour begins at 3:50
p.m.

Museum store open
until 5:00 p.m.

Closed days

St. Patrick's Day
Easter
August 26–29
Thanksgiving Eve
Thanksgiving
Christmas Eve
Christmas Day
January 6–9
January 27–30

ACCESSIBILITY

The Juliette Gordon Low Birthplace has full elevator access for tours and programs. We have one wheelchair available to visitors upon request. The main entrance to our site is at street level through the garden on Oglethorpe Avenue. You can also enter through the street level store entrance on Bull Street. This is not an automated entrance.

Your reserved tour time is the time when your tour begins. Plan to arrive at least 10 minutes in advance to keep your visit stress-free. If you're entering through the Oglethorpe Avenue

gate, cross the garden to the ticket building and check in at our welcome desk. There is an automated entry button on the right-hand set of double doors as you approach the building. If you're entering through the entrance on Bull Street, head straight through our gift shop. This will lead you into the ticket building with the welcome desk appearing on your left.

Each tour offering has a social story to help you prepare for your visit. To access these, go to our website and click "Accessibility" under the "Visit" tab. Visitors who wish to request additional accommodations may call us at



912-233-4501. Please note that requests for interpreters should be made at least two weeks in advance of your visit.

PARKING

The Birthplace is in the heart of downtown, so finding parking can be challenging. Allow yourself ample time to find parking. There is no parking on site, and limited metered street parking is available. The nearest city parking garages are the Liberty Street Garage and the State Street Garage. For more information on parking locations, parking rates, and the free downtown shuttle, visit the City

of Savannah Mobility and Parking Services website.

SERVICE ANIMALS

A service animal, as defined by the Americans with Disabilities Act, is a dog trained to do work or perform specific tasks for a person with a disability. Service dogs are welcome at the Juliette Gordon Low Birthplace. Visitors are not allowed to bring emotional support animals inside the museum.

RESTROOMS

Accessible restrooms are available for museum guests in our

ticket building by the ticket desk and in the Orientation Gallery inside the museum. There are restrooms next to our program rooms available to program participants. Our restrooms do not have hand dryers, automatic doors, or auto flush mechanisms. They do have changing tables and handicap accessible stalls.

SENSORY CONCERNS

Light, noise, and crowds can vary throughout the site, depending on the time of day and year. If someone in your group has sensory concerns, consider bringing noise-reducing headphones. Busy times vary depending on holidays, school vacations, weather, and other factors. September (after Labor Day) and November (with exception of Thanksgiving week) are usually the quietest months to visit. A quiet room is available to any program participant who needs to step away from program activities for a brain break. If you would like more information about sensory accommodations, please call us in advance of your visit.

CONTACTING US

The best way to contact the Birthplace is directly by phone at 912-233-4501 during our operating hours. You can also email us at birthplace@girlscouts.org, but please allow three to five business days for a response.





GUIDED TOURS

A guided tour of the Juliette Gordon Low Birthplace gives your troop an exciting look into the history of our remarkable founder and her home, as well as a chance to celebrate the movement that is still building girls into strong women of courage, confidence, and character over 100 years later.

Guided tours last 40-50 minutes, and ticket prices differ according to type. Girl Scout student and Girl Scout adult tickets are \$10; senior and military tickets are \$12. Non-Girl Scout adult tickets are \$15, and young children under the age of five are free. Since

tour times vary, we recommend booking online to see accurate availability. Each guided tour reservation can accommodate 16 people, so if you're planning a trip for a larger group, we recommend splitting them between different tour times.

GIRL SCOUT TROOP EXPERIENCE

Girl Scout Troop Experiences provide a unique opportunity for your troop to bond and build lasting friendships during their trip to the Birthplace. These experiences, specially designed by our Birthplace program team, help girls develop important life skills such as leadership,

creativity, communication, and problem-solving.

During a Girl Scout Troop Experience, your troop will explore the historic home and connect the past to the present with a fun, hands-on activity session. With a variety of Girl Scout Troop Experiences to choose from, finding the right fit is important to ensure a successful visit. We suggest talking to your troop about each program and seeing which one piques their interest.

Girl Scout Troop Experiences last 3 hours and have a standard price of \$28 per person, with children under five free.



Groups must have at least eight participants (including at least one adult), and must not exceed 16 people total. As with guided tours, we recommend splitting groups larger than 16 between different reservations.

Over Teacups is our most elaborate program priced at \$42 per person. Groups must be either Seniors, Ambassadors, or adult Girl Scout alums, have at least six participants (including at least one adult), and must not exceed 12 people total.

See all of our Girl Scout Troop Experiences on the next few pages.

Guided Tour or Girl Scout Troop Experience?

Troop leaders often ask which Girl Scout offering at the Birthplace suits their troop's needs. Take this short quiz below to see which type of reservation works best for your group!

What does your Savannah itinerary look like?

- A) Jam-packed! We have lots to see and do, with little time in between.
- B) Relaxed. We have things to do, but we're not in a rush and have plenty of time.

How flexible is your troop's trip budget?

- A) We're keeping a tight budget.
- B) We're okay with spending a little more on a special experience.

How does your troop learn best?

- A) We like a shorter, more structured approach where the girls can listen and observe.
- B) We like a longer, more interactive approach where the girls can participate hands-on.

Is it possible to schedule your reservation a month in advance?

- A) No, we still have some last-minute logistics we're figuring out.
- B) Yes, we want to plan as far in advance as possible.

Tally up your score, with As being one point and Bs being three points. Scoring eight or above means a Girl Scout Troop Experience might be more suitable for your group, while a score below eight indicates a guided tour may be a better fit. Use these questions with your troop to guide your decision.



Girl Scout Troop Experience

PICTURE THIS!

From a young age, Juliette Gordon Low discovered she had a passion for art and storytelling—a passion she shared with the earliest Girl Scout troops. Inspired by the work of Juliette and other women artists of the Progressive Era, participants will take on the role of a member of an artist collective creating art for an exhibition. At the end of the session, participants will receive a take-

home activity with guidelines on hosting an art show.

Picture This! gives girls an opportunity to express who they are, what interests them, and how they see the world. The goal of this program is for participants to engage in self-reflection and humor, stretching their imaginations beyond what they see to focus on what might be.





SHE'S GOT GAME

Are you afraid of making mistakes? Saying the wrong thing? Starting something new? What holds you back from taking action in life? Playing games can help you with that! Juliette Gordon Low might have realized that the time she spent as a girl playing and making up games with family and friends helped give her the courage, confidence, and charac-

ter she needed to start Girl Scouts. She made sure that having fun was an important part of Girl Scouting from the beginning. Carry on this Girl Scout tradition, have fun, and face your fears while playing games with other Girl Scouts.

She's Got Game is an exploration into communicating confidently. Our focus extends beyond presentations,

with improvisational games that nurture advocacy skills and boost self-assurance. By participating, girls learn to conquer fears of risk, embarrassment, and failure, fostering resilience and personal growth. Program activities also illuminate the rich history of early Girl Scouts, drawing connections to the remarkable life of Juliette Gordon Low herself.







HOUSE FOR ALL

The Juliette Gordon Low Birthplace opened its doors to visitors in 1956, with the goal of being a “house for all girls.” What does it mean to make a place where everyone feels welcome and included? How would you design a building to be fun and easy for anyone to use? What resources do you need to break through barriers to accessibility? In this strategy game,

you’ll trade cards and collaborate with your teammates to design a welcoming, accessible place for your imaginary clients to live, work, and play. You’ll find out about inclusive design and how designing for accessibility first can make the world a better place for everyone.

Collaborating in *House for All* promotes the spirits of

teamwork and gives girls the opportunity to place themselves in the shoes of individuals with different abilities. The most important element of this program is its application in the real world. Your troop will leave with a fresh perspective on how they can make a difference in their own communities.



OVER TEACUPS

Imagine a warm, comforting cup of tea in your hand, the gentle murmur of conversation filling the room, and the sense of sisterhood in the air as you sit comfortably in Juliette's family parlor. For generations, women have gathered at teatime to talk about real challenges and work for change, opened tea rooms to fund their causes, and sold cakes and cookies to fight for justice. Juliette Gordon Low enjoyed the ritual of afternoon tea often. It was "over teacups" that Juliette and her cousin Nina Pape introduced the Girl Scout Movement to the United States.

Girl Scout Seniors and Ambassadors are invited to a special tasting tour and tea, where troops taste their way through stories from Juliette's life and hear how other trailblazing women have used food to make the world a better place. Later, girls will sit down together for tea with light refreshments in the same parlor where Juliette Gordon Low hosted tea parties for the first Girl Scouts. And maybe, just as it did for Juliette Gordon Low and other daring women before and since, your tea talk will inspire a recipe for a better future.





Which program fits my group?

Do you want to foster your troop's creativity and self-expression?

Consider *Picture This!* if your troop is artistic, prefers working individually, or varies in age.

Do you want to help your troop build their public speaking skills in a fun and exciting way?

Consider *She's Got Game* if your troop is high energy, enjoys improvisation, and likes playing imagination-based games.

Is your troop interested in learning about positively contributing to their community?

Consider *House for All* if your troop prefers to work together, likes puzzles, and enjoys tabletop games or games with design elements.

Do you have a troop of Seniors or Ambassadors that want to be immersed in Girl Scout history?

Consider *Over Teacups* if your troop likes trying new things, loves history, and is looking for a more formal experience.



RESERVATION PROCEDURES

Visiting troops can easily book their guided tour or Girl Scout Troop Experience reservation through our website or by contacting the Birthplace directly. The website's online reservation system allows groups to select their preferred date and time, ensuring a seamless booking experience. It is advisable to

book well in advance, especially during peak seasons like spring break and summer, or if you have specific time constraints. Reservations become available to book six months in advance.

Once you've booked your tour, a confirmation email is sent to your inbox. Be sure to save this email, as it will have important reservation details such as your tour date, tour time, and booking number.

Ordering group t-shirts and joining Circle of Friends can be done ahead of time by visiting our website. Completing these before your trip makes planning a breeze and leaves more time to enjoy your troop's experience.

As a helpful tip, troop leaders should explore the Juliette Gordon Low Birthplace website for any special events, promotions, or discounts that may be available. Following the Birthplace on



social media platforms can also provide updates on upcoming programs and exclusive opportunities.

Be punctual for your scheduled tour or program to make the most of the experience. If issues arise with your reservation, give the Birthplace a call directly and we'll work to accommodate your desired changes.



Photo Packages at the Birthplace

Commemorate your troop's trip to the Birthplace by booking a photo package with our preferred partner, Photos by Becky! With over 15 years of Girl Scout photography experience, Becky Flaxer is the Birthplace's first choice when it comes to capturing high-quality memories. Becky will lead your group in an unforgettable photography experience, capturing any combination of photos you can imagine. Sessions are approximately 40 minutes. Photos are taken in front of and around the Birthplace and shipped to one address. This is a great memento for leaders, volunteers, and girls!

Simply choose the "photo package" option when booking your tour. Once you've booked, click the Photo Package link on your confirmation letter. After reserving your photo package, pre-visit instructions are sent to your email to ensure the photo sessions goes smoothly. Already booked your experience, but didn't add a photo package? Contact the Birthplace to amend your reservation.

Reservations for photo packages must be made 48 hours in advance and meet our 10-print minimum.



MUSEUM SHOP

The Juliette Gordon Low Birthplace Store proudly features women-owned businesses, many of which are owned by Girl Scout alums. The store also features Fair Trade and locally-owned businesses, as well as Girl Scout-branded merchandise.

Whether you are looking for the perfect gift or a souvenir to remember your visit, the Juliette Gordon Low Birthplace Store has any shopping trip covered. The store offers a range of beautiful, handmade artisan goods from around the world; locally

made self-care products using natural ingredients; and an array of exclusive Juliette Gordon Low Birthplace items. There is something to fit any Girl Scout's budget with a wide variety of products to meet anyone's taste.

The museum store is open from 10:00 a.m. to 5:00 p.m. If you book a Girl Scout Troop Experience, you will have a scheduled shopping time to make your planning easier. The store staff is excited and looking forward to your upcoming visit with your Girl Scout troop!

PLANNING AHEAD

Troops can decide on their pins and patches ahead of time by printing and completing the form online, found on our "Girl Scout Pre-Visit Checklist" page. By filling this out ahead of your visit, your troop has plenty of time to select their purchases and budget accordingly. If you don't fill out the form ahead of time, don't fret! We'll give you the chance during your visit.

Troops can order t-shirts ahead of time on the Girl Scout Shop website under "Shop Your Council" then select Juliette Gordon Low Birthplace.

Available Pins, Patches, and T-Shirts



Official Birthplace Pin

\$5 per Girl Scout

This pin is the official recognition for a Girl Scout who toured the Juliette Gordon Low Birthplace. It is worn on the front of the uniform, under the membership stars, and may be worn forever.



Friendship Pin

\$5 per Girl Scout

This pin is for a Girl Scout who has not toured the Juliette Gordon Low Birthplace. The pin is worn on the front of the uniform, under the membership stars, for one year. Then, it is retired to the back of the uniform or given to another Girl Scout in friendship.



Trefoil Patch

\$4 each



Girl Scout Gate Patch

\$4 each



House Patch

\$4 each



Founder's Portrait Patch

\$4 each



Grey Birthplace T-Shirt

\$23 each

Available in sizes Youth Small to Adult 3XL

FREQUENTLY ASKED QUESTIONS

What is your refund policy?

The amount refunded depends on the date of cancellation. 100% of fees are refundable up to 60 days prior to your visit and 50% of fees are refundable 31–59 days prior to visit. No refunds will be given within 30 days of your visit. If you need to cancel your reservation, call the Birthplace directly.

Is there a dress code for visiting the Birthplace?

No! Feel free to come for your visit wearing whatever makes you feel comfortable. Most often we see troops wearing their uniforms or matching t-shirts. However, this is not a requirement. Consider ordering Birthplace t-shirts before your visit.

Will we meet other Girl Scouts during our visit?

During the busy months of March, April, June, and July, your group will most likely run into other Girl Scout troops visiting Savannah. Feel free to call ahead and ask us how our reservations look for the day of your visit!

Can parents or non-Girl Scout chaperones participate in a Birthplace visit?

Certainly! Our reservations have a maximum of 16 participants, but if space is available,

they are welcome to participate. We do not have provisions for those who want to watch only. We encourage everyone on the reservation to be an active participant.

What can other adults who aren't participating do during their troop's visit?

Those who aren't participating in a Girl Scout Troop Experience are encouraged to take a general tour. They will not be with the troop, but staff can help them time their tour conveniently. For those wanting to take a break, there is ample resting space around the site. The garden is a great option, as well as benches in our ticketing area. Oglethorpe Street and Bull Street host convenient shopping and dining for a quick excursion before meeting troops back at the Birthplace.

What online resources are available to help plan our trip?

Troop-specific resources can be found on our website under the "Visitor Information" tab by clicking "Girl Scout Pre-Visit Checklist." Here you can find information about everything mentioned in *Birthplace Bound*, as well as printable forms to fill out before your visit.

Where do we wear our Birthplace pins?

They are worn directly across from the membership pin, below the numbers or name tag.

Is photography allowed?

Yes! You can take photos in and around the site. The only restrictions are no video, audio recordings, or flash photography during the historic house tour. We encourage troops to book a professional photo package with our partner, Photos by Becky. You can do so when reserving your Birthplace visit.

Where can we eat food on site?

Our outdoor garden is a great place for your troop to enjoy snacks and meals. Food is permitted in our ticketing area where recycling and trash bins are readily available. No food, gum, or candy is allowed in the museum.



How can we continue to support the Birthplace after our visit?

There are several ways to support our site after your visit. Consider joining Circle of Friends, a membership group that directly supports the Birthplace. Your troops donation helps us in our mission of preserving and sharing the legacy of Juliette Gordon Low. Additionally, you can support us by spreading the word about your visit and sharing your experience with others. Write a review on travel websites, post about it on social media, or simply tell your friends and family about the Birthplace.

Girl Scouts' Own and Pinning Ceremony

The idea of Girl Scouts' Own came from our founder and is a special ceremony for Girl Scouts to reflect on their experiences in Girl Scouting. Today's Girl Scouts' Own commemorates the visit to the Juliette Gordon Low Birthplace and earning the Birthplace pin.

Although troops are welcome to plan their own, you can request a long and short form ceremony script created especially for our site during your visit. Birthplace Girl Scouts' Own and Pinning Ceremonies traditionally take place in the garden, however staff can help find a sheltered location in the case of rain. You may add a bridging, awards, or other meaningful component; however, Birthplace ceremonies do not include candle lighting, sparklers, glitter, or confetti so we can keep our site safe and clean for all our visitors.



Circle of Friends Membership

“Truly, ours is a circle of friendships,
united by our ideals.”

—Juliette Gordon Low, 1925

In 1953, Girl Scouts sent in their dimes and dollars to buy and restore the Juliette Gordon Low Birthplace. Their donations helped save our house from being torn down. Instead, it opened as a museum and program center. Your troop can be part of this tradition by joining Circle of Friends, a membership group that directly supports the Birthplace.



The cost of membership is \$2 per girl in the troop, with a minimum of \$20 per troop. Members may purchase the Circle of Friends patch for \$3 to signify their membership. The patch may be worn on the front of the uniform. The patch features the house with side porch embroidered in yellow on a royal blue background.



During a visit to the Birthplace, your troop will have the opportunity to join Circle of Friends. If you wish to join in advance, please fill out and mail the Circle of Friends form linked below. If you have any questions, contact our shop at 912-257-4314 or birthplace@girlscouts.org.

By becoming a member, your troop will ensure the tradition of preservation continues for generations to come. Together, we can keep the flame of Juliette Gordon Low's vision burning bright, inspiring girls and young women to make a positive impact on the world, just as she did.

JOIN TODAY!



learn how to become

a bee champion

(and earn your Bee Garden Tour badge)

Bee Garden Tours | Honey Tastings

Gifts | Personal Care + Wellness

Broughton Street • River Street • Johnny Mercer Blvd.

savannahbee.com



JAVA
BURRITO
COMPANY

mexican eatery + coffeehouse

LOCALLY OWNED | 420 E. BROUGHTON ST. | 912-298-5282

ASK US ABOUT OUR EVENT SPACES FOR THE TROOPS!
3 MINUTES FROM THE JULIETTE GORDON LOW BIRTHPLACE

WWW.JAVABURRITO.COM
@JAVABURRITOCOMPANY



*Savannah's Quintessential Corner Cafe
Since 1986*

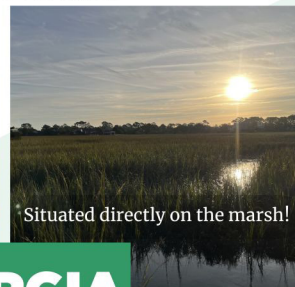


**GOOSE[®]
FEATHERS**
EST 1986
• CAFE & BAKERY •



Serving Breakfast and Lunch until 2:30pm
39 Barnard Street * 912-233-4683

Experience Burton 4-H Center on Tybee Island



Situated directly on the marsh!

GEORGIA
BURTON 4-H CENTER ON TYBEE ISLAND



Walking Distance to the Beach!



Lodging for up to 130 people!

Visit our website at bit.ly/burton4h
or scan here

University of Georgia is an Equal Opportunity, Affirmative Action,
Veteran, Disability Institution. If you need a reasonable
accommodation or language access services, contact Burton 4H
Center at 912-786-5534 or burton4h@uga.edu at least three weeks
prior to the program date.



**LOCALLY
MADE**
Savannah

223 W Broughton St

**10% off for all Girl Scout Troops at
the Soda Pop Shop & Trucker Hat
Bar!**

DIY Trucker Hat Bar



Crazy Shakes Ice Cream Slushies



Pick Up or
Downtown
Delivery

**Creative Group
Workshops**

Having over 200 artisans allows us to offer a fun
& unique group experience suitable for all ages
and skill levels. And, **EARN A FREE PATCH!**

**Boxed
Lunches**



Get In Touch

912-999-7051

www.locallymadesavannah.com
tonya@locallymadesavannah.com



Kevin Ruck/Shutterstock.com

All About Savannah

CITY HISTORY

Welcome to Savannah, Georgia! Founded in the 1730s by General James Oglethorpe, our city stands as one of the oldest cities in the United States. As your Girl Scout troop explores the cobblestone streets and historic squares, you'll discover the city's role in shaping America's history. Savannah was an integral part of the British colonial system and played a crucial role during the American Revolution as the site of the Siege of Savannah in 1779.

The city's distinct layout, with 22 picturesque squares surrounded by historic homes and churches, reflects Oglethorpe's

vision for a utopian city. Each square tells a story, from the iconic Forsyth Park with its stunning fountain to Chippewa Square, famous for the bench scene in the movie "Forrest Gump." Take a stroll through these squares and you'll be transported back in time, surrounded by 18th and 19th-century architecture that has been lovingly preserved.

Savannah's rich history extends through centuries. The preservation of our city's architectural heritage earned Savannah the distinction of being the first in the U.S. to have a National Historic Landmark District. Savannah is even more special to Girl Scouts, as it is the home-

town of Juliette Gordon Low. Her legacy continues to inspire within the city's historic walls.

Explore historic landmarks, try local cuisine, and soak up the stories of Savannah's fascinating history. From its beginnings as a colonial stronghold to its influence on trailblazing women like Juliette Gordon Low, Savannah is brimming with stories that are waiting to be discovered. We invite you to experience the historic charm of this captivating city with your Girl Scout troop.

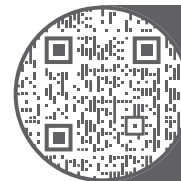
GIRL SCOUT PROGRAMMING

Earn unique patches for all levels and ages!



Juliette's Family Tree

Discover how three generations of Gordons influenced Juliette, served Savannah, and changed the country with their ideas.



scan for
more
info!



Grandfather Gordon's Railroad

Learn how Juliette's grandfather brought the grown and impact of the railroad to Savannah.



Gullah Adventures

Explore the beauty of lowcountry ecology and learn about Georgia's rich Gullah heritage.



Life of a Civil War Soldier

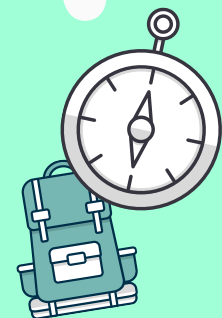
Find out how the Civil War affected Juliette and her family and learn how to be a soldier.



Alida's Legacy

Explore the former home of preservationist and trailblazer Alida Harper-Fowlkes and learn about the many histories that made Savannah what it is today.

For more information or to book your program, visit chsgeorgia.org or contact programs@chsgeorgia.org



MASSIE HERITAGE CENTER

Savannah's Museum for History & Architecture

Girl Scout Trooptivities

Explore Juliette Gordon Low's old neighborhood and earn a patch with Massie's specially designed Girl Scout activities!

Each program is a guided or self-guided hands-on & placed-based learning activity that focuses on the unique heritage and history of Savannah.

Go (Way) Back to School

Learn about 19th-century school life.

Visit Ancient Greece

See classical architecture in Savannah and explore the city's hidden gems.

Find Your Place

Go on a tour of Massie's neighboring squares, filled with historic monuments & antebellum-era architecture.

Daisy's Savannah

Discover how Juliette's hometown influenced the very first Girl Scout Handbook.

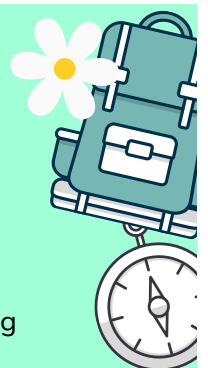
Cost: Guided: \$18 / attendee (minimum of 5 attendees)

Self-guided: \$12 / participant*

non-participating attendees will be charged standard museum admission

Contact: 912-395-5070 to book today!

www.massieschool.com | 207 E. Gordon Street, Savannah, GA 31401



GETTING HERE

Getting here is part of the excitement, and Savannah offers various transportation options to make your journey smooth and enjoyable.

Arriving by Air

Savannah/Hilton Head International Airport (SAV) is the primary airport serving the city. It was voted #1 airport in the U.S. in the 2023 Condé Nast Traveler Readers' Choice Awards! If you're flying in, you'll find numerous airlines providing connections to Savannah. Taxis, ride-share services, and shuttles are readily available to take you to your accommodation from the airport.

By Car

Savannah is well-connected by major highways, making it easily accessible by car. Interstate 95 (I-95) is a major north-south route that connects Savannah to

cities along the East Coast, while Interstate 16 (I-16) is a key east-west route leading into the city. These highways offer a convenient and scenic way to reach Savannah, allowing you to enjoy the journey as much as the destination.

Train Travel

The Savannah train station is located a few miles west of the Historic District, about a ten-minute drive. Train journeys can be a scenic and comfortable way to explore the region.

Regional Buses

Explore your options with regional bus services, such as Greyhound or Megabus, which provide affordable and convenient transportation to and from Savannah. These services connect the city with nearby destinations, offering flexibility in your travel plans.

Savannah Weather

	Average High	Average Low	Average Rain
JAN	60 ° F	39 ° F	3.7"
FEB	64 ° F	42 ° F	2.8"
MAR	71 ° F	48 ° F	3.7"
APR	78 ° F	54 ° F	3.1"
MAY	78 ° F	62 ° F	3.0"
JUN	90 ° F	70 ° F	6.0"
JUL	92 ° F	73 ° F	5.6"
AUG	91 ° F	72 ° F	6.6"
SEP	86 ° F	68 ° F	4.6"
OCT	78 ° F	58 ° F	3.7"
NOV	71 ° F	48 ° F	2.4"
DEC	62 ° F	41 ° F	3.0"



WHERE TO STAY

As you plan your troop's adventure, exploring the various lodging options around town is a crucial part of planning an unforgettable experience. Here's a guide to different accommodations Savannah has to offer:

Historic District Hotels

Step back in time by staying in one of Savannah's historic hotels. Located in the heart of the Historic District, these hotels provide easy access to the city's iconic squares, landmarks, and the Birthplace. Before booking, make sure to check with each hotel about benefits such as Girl Scout rates, complimentary meals, and available transportation.

Midtown Hotels

For those seeking contemporary lodgings at a more affordable price point, midtown hotels in Savannah provide comfort without breaking the bank. Enjoy hotel amenities with your troop while still being close to the city's vibrant energy and attractions. Make sure to confirm transportation since midtown hotels are often not in walking distance to the Birthplace.

Vacation Rentals

For a more immersive and local experience, consider renting a vacation home or apartment through online platforms. Enjoy the flexibility of communal living spaces, cook homemade meals, and savor the freedom of living like a Savannah local.

There are plenty of options to choose from downtown, midtown, and on Tybee Island.

Camping Adventures

If your troop is up for an outdoor adventure, explore the campgrounds and RV parks surrounding Savannah. This option provides a unique opportunity

to connect with nature while still being within reach of the city's attractions. Gather around the campfire and create lasting memories with your troop under the starry Savannah sky.





ENCRYPTION

Escape Game!

31 Montgomery St.
Savannah, GA

Can you beat the clock?

Located in the Historic District
across from City Market!



Two floors of games!

(912) 424-5774 • encryptionescape.com



Gray Line Savannah offers an abundance of unique excursions and exciting experiences ranging from Dolphin cruises to Daufuskie Island Day Trips to Gullah Geechee Tours and more!

Explore Savannah Trolley Tour

Featuring a 90 minute uninterrupted trolley tour of Savannah's elegant and intriguing Historic District, this tour can be privatized and discounted to accommodate groups of 10 or more!

To book this tour or any of our other excursions, simply scan this code!



SCAN TO BOOK NOW!



Save \$9 on the Explore Tour
using **GIRLSCOUTS** at checkout!

Code cannot be combined with any other discounts and is valid only on booking through website.



**SIGHTSEEING
EVERYWHERE**

www.savannahgrayline.com
912-964-8989



GETTING AROUND

Navigating the streets of Savannah as a Girl Scout is an adventure in itself! The city's layout is designed for exploration, and there are various fun and convenient ways to get around.

Stroll Through the Historic District

Savannah's Historic District is a walker's paradise with its cobblestone streets and 22 beautifully landscaped squares. Lace up your walking shoes and set out on foot to truly absorb the city's unique atmosphere. As you explore, keep an eye out for historical markers and details that make each square special.

Hop-On, Hop-Off Trolley Tours

For a delightful and informative ride, consider hopping on one of Savannah's hop-on, hop-off trolley tours. These iconic trol-

leys provide a narrated tour of the city's key landmarks, allowing you to learn about its history while enjoying the comfort of a guided ride. You can disembark at various points of interest and rejoin later, giving you the flexibility to explore at your own pace. Even better, there's a trolley stop right in front of the Birthplace!

Pedicabs and Carriages

For a touch of old-world charm, try a carriage or a pedicab ride through the streets of Savannah. It's a unique and leisurely way to see the sights while a guide shares fascinating stories about the city. This mode of transportation is not only eco-friendly but also adds a magical touch to your Savannah experience.

Riverfront Activities

Explore the city from a different perspective by taking a riverboat cruise along the Savannah River.

These cruises offer picturesque views of the historic waterfront and provide a relaxing way to see the cityscape. Additionally, riverfront pathways are perfect for a bike ride, allowing you to cover more ground and take in the scenic beauty of the area. Don't forget about the Savannah Belles Ferry that offers free passages across the river!

Ride-shares and Taxis

Jumping into a ride-share or taxi is a flexible and convenient way for your Girl Scout troop to explore Savannah. This is an ideal option for short journeys between attractions or for when your troop's energy starts to wane after a day full of adventure. Remember, whenever you're traveling with a large group, it's best to book larger vehicles or multiple cars in advance. And don't forget to always follow Girl Scout safety guidelines when using any form of transport.

Car and Van Rentals

When it comes to flexibility and convenience, renting a vehicle is a game-changer. Ideal for larger troops or those with specific schedules, having your own wheels allows you to tailor your itinerary to your troop's preferences. Savannah parking is a challenge; be prepared for parking fees and difficulties finding spots.





F11 Photo/Shutterstock.com

MUST-SEE GIRL SCOUT SPOTS

In addition to the Birthplace, Savannah has a handful of important sites connected to the Movement's history. Make sure to visit them all for the complete Girl Scout experience!

Girl Scout First Headquarters

This historic site is owned and operated by Girl Scouts of Historic Georgia and houses a museum and a shop. It offers exciting interactive educational experiences for Girl Scouts, as well as exhibits that chronicle the evolution of the Movement and the impact it has had on generations of girls.

Andrew Low House

Step into the opulent Andrew Low House, where Juliette Gordon Low resided at the end of her life. This 19th-century historic house museum provides a unique perspective on the life of the Low family and the social context of the time.

Telfair Square

Located a few blocks from the Birthplace and behind the Juliette Gordon Low Federal Building, Telfair Square is home to a low-lying cement trefoil monument honoring Girl Scouts. Make sure to stop by this square during your trip to Savannah for the perfect photo op!

Savannah History Museum

Gain a deeper understanding of the city's past by visiting the Savannah History Museum with your troop and view a special exhibit of dresses worn by Juliette Gordon Low.

Laurel Grove Cemetery

Your troop can honor Juliette by visiting her final resting place in Laurel Grove Cemetery. Look for the labeled wooden signs that will guide you to her burial location. We ask to please be respectful and leave nothing behind.

Ghost Talk Ghost Walk

SAVANNAH'S
ORIGINAL
GHOST TOUR

It started
with us!

A LEISURELY WALKING TOUR
THROUGH ENCHANTING HISTORIC SAVANNAH

Private tours for Girl Scout Troops
with advance reservations.

Flexible tour times. Patches available.

FOR RESERVATIONS

(912) 233-3896 or
ghsttalkwalk@aol.com

Tours depart from John Wesley's monument
in Reynolds Square on Abercorn Street.

GHOSTTALKGHOSTWALK.COM



Visit the historic house
that was once the home
of Juliette Gordon Low
and be a part of Girl
Scout history!



Make a reservation for
your Troop today! Contact
Ginger Varner at
912-233-1828 x106 or
gvarner@andrewlowhouse.com



ANDREW LOW
HOUSE
MUSEUM

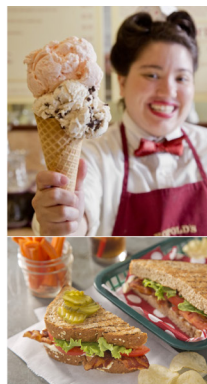
329 Abercorn St., Savannah
at Lafayette Square
andrewlowhouse.com
Mon-Sat 10-4pm, Sun 12-4pm



Girl Scout Picnic Packages

- Half or Whole Sandwich
- Lay's Chips or Popcorn
- Fresh Fruit
- Beverage
- Single Scoop of Leopold's
Homemade Ice Cream

Just a walk from Juliette Gordon
Low's birthplace!



Patches Available!



For info and pricing, visit:
leopoldsicecream.com

212 E. Broughton St | Savannah, GA 31401
912-234-442 | info@leopoldsicecream.com

ADVENTURE IN Dining



- PRACTICE** social and dining skills that will
"Last a Lifetime"
- ENJOY** a 3 course meal at a historic restaurant
on Savannah's famous River Street
- RECEIVE** a corsage
- EARN** an Etiquette Patch

Girl Scouts leave Savannah with **CONFIDENCE**
to navigate socially
now and throughout their lives.



Eti Kit

Janis Encapera
443-562-7374
Janis@EtiKitSavannah.com



DOWNTOWN SAVANNAH

Adventure into downtown Savannah, where every corner holds something exciting! Whether you're into shopping, dining, or soaking up the charm, Savannah's downtown district has it all.

City Market

Start your exploration in City Market, a lively hub of shops, restaurants, and galleries. This area is perfect for scouting out unique souvenirs, handmade crafts, and local artwork. Your troop can stroll through the streets, enjoy occasional live music, and indulge in the vibrant atmosphere.

River Street

For a taste of Savannah's maritime history, head to River Street. This iconic waterfront area boasts a plethora of shops offering everything from candies to clothing. Grab some pralines, check out the eclectic boutiques, and enjoy the stunning views of the Savannah River.

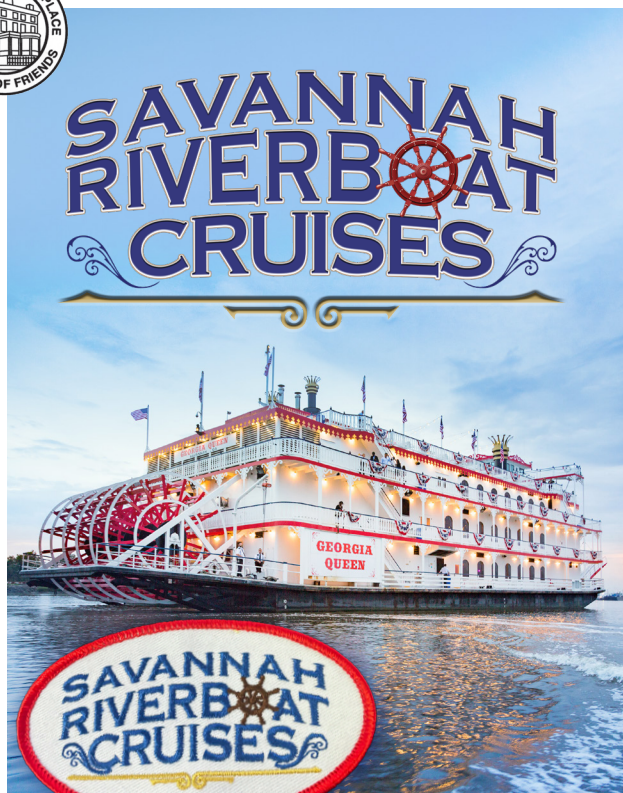
Broughton Street

Broughton Street is a shopper's paradise with a mix of big-name brands and charming boutiques. From fashion to sweets, your troop can explore different shops and snag a few souvenirs to remember your trip.

Forsyth Park

For a touch of greenery, head to Forsyth Park. This expansive green space invites troop picnics, outdoor games, and moments of camaraderie under the Southern sun. It's a vital part of your Girl Scout adventure in Savannah.

As you navigate the charming streets of downtown Savannah, remember to embrace the history, indulge in local flavors, and most importantly, have a blast with your fellow Girl Scouts. Savannah awaits your troop's energy, so gear up for an unforgettable journey through Juliette's hometown!



Join us on the River!

Special troop rates for all Girl Scouts!

WE CAN BOOK YOUR TOURS!

.....Daytime Cruises.....

⚓ NARRATED HARBOR SIGHTSEEING CRUISE

- 1 p.m. lasts 1.5 hours
Daily from Mar-Nov **PLUS** Dec 26-31
Every Sat & Sun in Jan & Dec
Every Wed-Sun in Feb

- 3:30 p.m. lasts 1.5 hours
Daily from Apr - Oct
Saturday only in Feb, Mar & Nov

⚓ NARRATED HARBOR LUNCHEON CRUISE

- 1 p.m. lasts 1.5 hours
Saturdays in March
Mon-Sat from Apr-Oct

⚓ SUNDAY BRUNCH CRUISE

- 1 p.m. lasts 1.5 hours
Sundays from Mar-Oct

.....Evening Cruises.....

⚓ DINNER ENTERTAINMENT CRUISE

- 7 p.m. year-round
lasts 2 hours

⚓ MONDAY GOSPEL DINNER CRUISE

- 7 p.m. from Apr-Oct
lasts 2 hours

Within walking distance of the Historic District hotels & Juliette Gordon Low Birthplace.

FOR RESERVATIONS, TICKETS & SPECIAL OFFERS, VISIT

9 East River Street or www.savannahriverboat.com | 912.232.6404

Groups are always welcome! Additional dates may be scheduled based on minimum passenger requirements. Specialty Cruises can be added in for large groups.







Dawn Damico/ iStock.com

MIDTOWN SAVANNAH

Get ready to uncover the hidden gems of Midtown Savannah! This area has a plethora of fun and exciting activities to engage your Girl Scout troop.

Starland District

This vibrant and eclectic neighborhood is known for its artistic and creative atmosphere, making it a great destination for your troop to explore and learn. The district is home to numerous art galleries, studios,

workshops, businesses, and entrepreneurs. Troops can visit the district's shops and boutiques, which offer a variety of unique and handmade products. Experience the district's regular community events and festivals, featuring live music performances, food vendors, and interactive activities. Troop leaders can plan their visit to coincide with one of these events by checking Savannah's community calendars before your visit.

Daffin Park

Daffin Park offers ample space for troop games, picnics, and exercise. Additionally, the park features a playground, sports fields, and a beautiful lake, providing Girl Scouts with opportunities for both recreation and relaxation. This park is significantly less busy than Forysth Park, making it a great place to have a quiet moment away from downtown.

Volunteering

There are several local organizations located in Midtown Savannah that welcome volunteers, such as food banks, animal shelters, and community gardens. Troop leaders can coordinate with these organizations to plan a volunteer activity that aligns with the girls' interests and values. Hands-on service experiences can teach your girls the importance of giving back to local communities.

**All-Inclusive, Custom-Designed
Package Tours
For Troops of All Sizes**

- *Hotels will always include breakfast*
- *Tours will be designed for the size of your group and age of your girls*
 - *Box lunches and dinners from local restaurants will be included*



We have been working with Girl Scout Troops for over 20 years
Customer Service is Our Priority
Personal Attention to Each Troop is Our Pleasure

Please visit our website for more information:

www.pbnjtours.com

P.O. Box 2653 / Savannah, GA 31402

TollFree: 877-702-2767

Local: 912-927-2767

Email: pbnjtours@yahoo.com

ENGAGE WITH *HER*STORY



Doing Their Part! Girl Scouts in World War II

On March 12, 1944, the Girl Scout Organization donated a "check" of 15,340,000 volunteer hours of service to President Roosevelt representing their efforts towards the war since 1941.

Learn about the pivotal role played by the Girl Scouts and children on the Home Front through one of the most significant conflicts in history.



NATIONAL MUSEUM OF THE
MIGHTY EIGHTH AIR FORCE

175 Bourne Avenue Pooler, GA 31322
www.mightyeighth.org | Contact education@mightyeighth.org

\$5 per Girl Scout, Leader, and Chaperone
*Ask about our "Women Through Time" badge

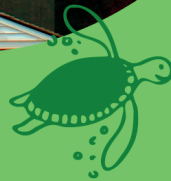
COME VISIT TYBEE ISLAND LIGHT STATION

WHERE HISTORY MEETS ADVENTURE

SPECIAL PROGRAM FOR GIRL SCOUTS!

RESERVATIONS REQUIRED
GROUP & PATCH DISCOUNT
CALL (912) 786-5801 TO INQUIRE!

LOCATED AT:
30 MEDDIN DR. TYBEE ISLAND, GA 31328
TYBEELIGHTHOUSE.ORG FOR MORE INFO



ADVENTURE

WITH YOUR TROOP

Experience the thrill of encountering dolphins in their natural habitat while enjoying breathtaking views of Tybee's serene coastal waters. From historic lighthouses, to majestic Fort Pulaski, to dolphins playing next to the boat, our tours offer something for everyone!

BOOK
TODAY



GIRL SCOUT SPECIALS:

TYBEE ISLAND

LOCATION

Located on Tybee Island, GA - just 16.4 miles from the Juliette Gordon Low Birthplace.



GROUP RATES

We offer discounted rates to Girl Scout troops. Contact us to learn more!



PATCHES

Available for pre-order or purchase on-site at the boathouse!



CONTACT US

(912) 658-2322

CAPTDEREK@COMCAST.NET

WWW.TYBEEDOLPHINADVENTURE.COM

3 OLD US HWY 80,
TYBEE ISLAND, GA, 31328

TYBEE ISLAND

Tybee Island is a coastal paradise just a short drive away from Savannah. This island gem is not just a beach retreat; it's a treasure trove of adventure, relaxation, and memories waiting to be made!

Tybee Island Beach

Enjoy Savannah's beach with the sun on your face and sand between your toes on Tybee Island. Whether your troop loves beach games, building sandcastles, or simply enjoying the ocean breeze, this expansive beach is the ideal starting point for a day of coastal fun.

Tybee Island Pier and Pavilion

Stroll along the pier for panoramic views of the Atlantic Ocean. Capture the moment with your troop and enjoy the breeze as you explore this iconic structure. The nearby pavilion offers a perfect spot for a seaside picnic or snack break.

Dolphin Tours

Tybee Island offers various boat tours that take you into the waters to spot playful dolphins. It's a fantastic way for your troop to connect with nature and witness these magnificent creatures in their natural habitat.

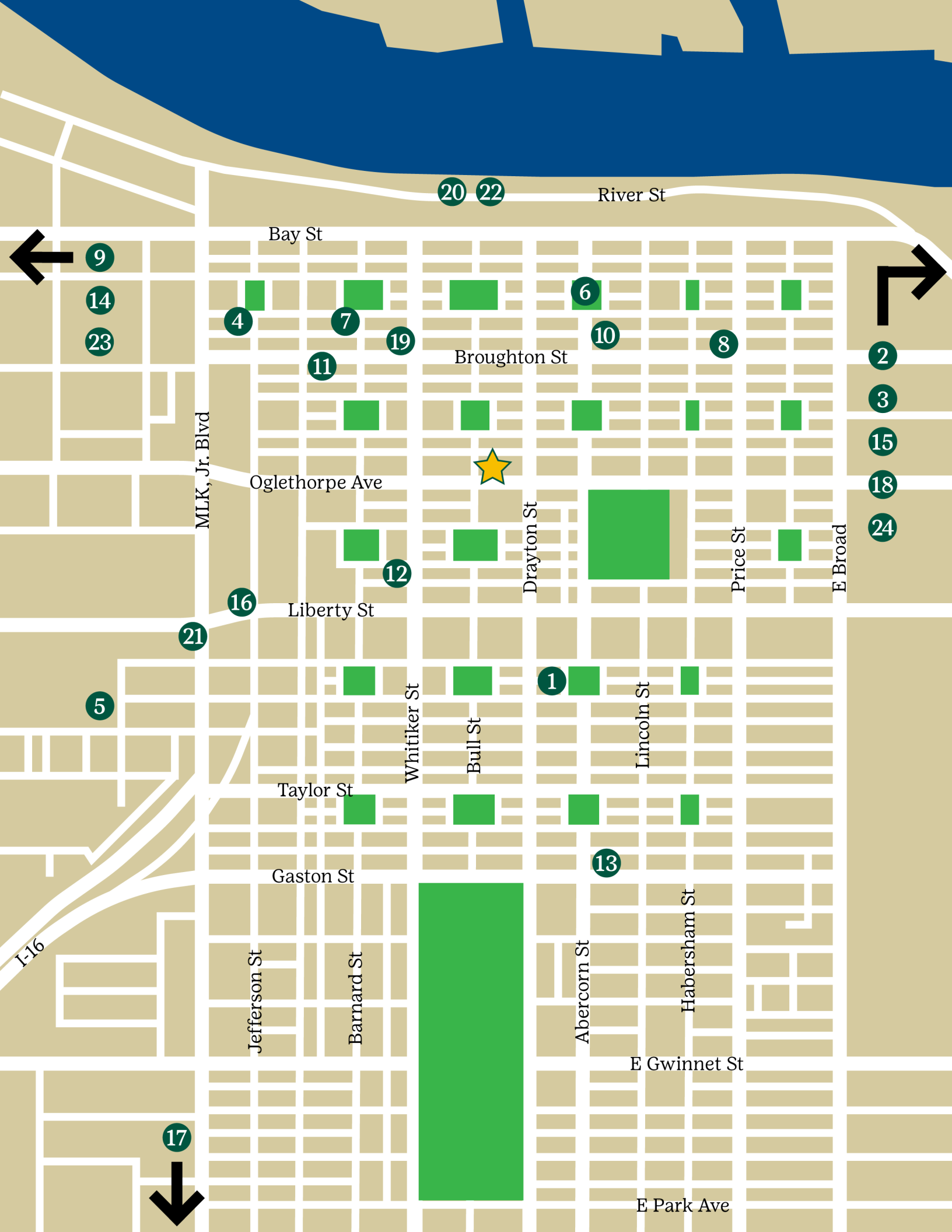
Water Sports

For a splash of adventure, consider a kayaking or paddleboarding excursion. Companies on the island provide equipment rentals and guided tours, allowing your troop to explore the waterways and marshes surrounding Tybee.

Exploring and Sightseeing

Dive into the island's popular destinations! Whether you're climbing the steps of the lighthouse or engaging in interactive exhibits that teach about marine life, Tybee Island's diverse attractions will leave you with lasting memories and a deeper appreciation for its unique natural beauty.





20 22

River St

Bay St

9

14

23

4

7

19

6

10

8

11

Broughton St

MLK, Jr. Blvd

Oglethorpe Ave



Drayton St

Price St

E Broad

2

3

15

18

24

12

16

Liberty St

21

5

Whitaker St

Bull St

1

Lincoln St

Taylor St

Gaston St

13

Jefferson St

Barnard St

Abercorn St

Habersham St

E Gwinnet St

E Park Ave

17

I-16

Advertiser's Map

- 1** **Andrew Low House Museum**
329 Abercorn St
912-233-6854
www.andrewlowhouse.com
- 2** **Burton 4-H Center**
9 Lewis Ave, Tybee Island
912-786-5534
www.georgia4h.org/4-h-centers/burton-4-h-center/
- 3** **Captain Derek's Dolphin Adventure**
3 Old US Highway 80, Tybee Island
912-658-2322
www.tybeedolphinadventure.com
- 4** **Encryption Escape**
31 Montgomery St
912-424-5774
www.encryptionescape.com
- 5** **Georgia State Railroad Museum**
655 Louisville Rd
912-651-6823
www.chsgeorgia.org/GSRM
- 6** **Ghost Talk Ghost Walk**
Tours start in Reynolds Square
912-233-3896
www.ghosttalkghostwalk.com
- 7** **Goosefeathers Cafe & Bakery**
39 Barnard St
912-233-4683
www.goosefeatherscafe.com
- 8** **Java Burrito Company**
420 E Broughton St
912-298-5282
www.javaburrito.com
- 9** **Kelly Tours**
2788 US-80, Garden City
912-964-2010
www.kellytours.com
- 10** **Leopold's Ice Cream**
212 E Broughton St
912-234-4442
www.leopoldsiccream.com
- 11** **Locally Made Savannah**
223 W Broughton St
912-999-7051
www.locallymadesavannah.com
- 12** **Harper Fowlkes House**
230 Barnard St
912-234-2180
www.chsgeorgia.org/HFH
- 13** **Massie Heritage Center**
207 E Gordon St
912-395-5070
www.sccpss.com/schools/massie/Pages/default.aspx
- 14** **National Museum of the Mighty Eighth Air Force**
175 Bourne Ave, Pooler
912-748-8888
www.mightyeighth.org
- 15** **Old Fort Jackson**
1 Fort Jackson Rd
912-232-3945
www.chsgeorgia.org/OFF
- 16** **Old Town Trolley Tours**
234 MLK, Jr. Blvd
912-233-0083
www.trolleytours.com/savannah
- 17** **Pin Point Heritage Museum**
9924 Pin Point Ave
912-355-0064
www.chsgeorgia.org/PHM
- 18** **Savannah Bee Company Bee Garden and Showroom**
211 Johnny Mercer Blvd, Wilmington Island
912-629-0908
savannahbee.com/pages/bee-garden-tours
- 19** **Savannah Bee Company Broughton Location**
104 W Broughton St
912-233-7873
www.savannahbee.com
- 20** **Savannah Bee Company River Location**
1 W River St
912-629-9975
www.savannahbee.com
- 21** **Savannah History Museum**
303 MLK, Jr. Blvd
912-651-6825
www.chsgeorgia.org/SHM
- 22** **Savannah River Boat Cruises**
9 E River St
912-232-6404
www.savannahriverboat.com
- 23** **Savannah/Hilton Head International Airport**
400 Airways Ave
912-964-0514
www.flySAV.com
- 24** **Tybee Island Light Station & Museum**
30 Meddin Dr, Tybee Island
912-786-5801
www.tybeelighthouse.org

Advertiser's Index

The advertisers in Birthplace Bound help support the Juliette Gordon Low Birthplace. The hotels, restaurants, tour companies, and sites listed on these pages choose to purchase an advertisement because they want your business. Advertisers listed in **BOLD** on a shaded line are members of the Circle of Friends. Members' ads display the Circle of Friends logo. The Birthplace does not endorse any advertiser. For ratings and travel information, please consult AAA, Mobil Travel Club, or other travel guides.

Business Name	Business Address	Phone	Page
Andrew Low House Museum	329 Abercorn St, Savannah, GA 31401	912-233-6854	39
Burton 4-H Center	9 Lewis Ave, Tybee Island, GA 31328	912-786-5534	31
Captain Derek's Dolphin Adventure	3 Old US Highway 80, Tybee Island, GA, 31328	912-658-2322	44
Encryption Escape	31 Montgomery St, Savannah, GA, 31401	912-424-5774	36
Etikit Savannah	4 Keelson Ln, Savannah, GA, 31411	443-562-7374	39
Georgia State Railroad Museum	655 Louisville Rd, Savannah, GA, 31401	912-651-6823	33
Ghost Talk Ghost Walk	Tours start in Reynolds Square	912-233-3896	39
Goosefeathers Cafe & Bakery	39 Barnard St, Savannah, GA, 31401	912-233-4683	31
Java Burrito Company	420 E Broughton St, Savannah, GA 31401	912-298-5282	30
Kelly Tours	2788 US-80, Garden City, GA 31408	912-964-2010	26
Leopold's Ice Cream	212 E Broughton St, Savannah, GA 31401	912-234-4442	39
Locally Made Savannah	223 W Broughton St, Savannah, GA 31401	912-999-7051	31
Harper Fowlkes House	230 Barnard St, Savannah, GA, 31401	912-234-2180	33
Massie Heritage Center	207 E Gordon St, Savannah, GA, 31401	912-395-5070	33
National Museum of the Mighty Eighth Air Force	175 Bourne Ave, Pooler, GA 31322	912-748-8888	43

Advertiser's Index

Business Name	Business Address	Phone	Page
Old Fort Jackson	1 Fort Jackson Rd, Savannah, GA, 31404	912-232-3945	34
Old Town Trolley Tours	234 MLK, Jr. Blvd, Savannah, GA, 31401	912-233-0083	6
PBnJ Tours	P.O. Box 2653, Savannah, GA, 31402	912-927-2767	43
Pin Point Heritage Museum	9924 Pin Point Ave, Savannah, GA, 31406	912-355-0064	33
Savannah Bee Company Bee Garden and Showroom	211 Johnny Mercer Blvd, Savannah, GA, 31410	912-629-0908	7
Savannah Bee Company Broughton St Location	104 W Broughton St, Savannah, GA, 31401	912-233-7873	7
Savannah Bee Company River St Location	1 W River St, Savannah, GA, 31401	912-629-9975	7
Savannah History Museum	303 MLK, Jr. Blvd, Savannah, GA, 31401	912-651-6825	33
Savannah River Boat Cruises	9 E River St, Savannah, GA, 31401	912-232-6404	40
Savannah/Hilton Head International Airport	400 Airways Ave, Savannah, GA, 31401	912-964-0514	2
Tybee Island Light Station & Museum	30 Meddin Dr, Tybee Island, GA, 31328	912-786-5801	44

THE BIRTHPLACE AND CHILDHOOD HOME
JULIETTE ^f GORDON LOW

FOUNDER OF THE GIRL SCOUTS OF THE U.S.A.
Now owned by the Girl Scouts of the U.S.A.

this building will be restored as a national
Girl Scout Center. The campaign to restore
and modernize the Juliette Gordon Low Birthplace
is being conducted by Girl Scout councils through-
out the nation.

Give it your support

"Savannah, Cradle of Girl Scouting, Showplace of Historic Beauty"



Juliette Gordon Low
Birthplace Museum

